

# Climate Action Plan



**Chieveley Primary**



# CLIMATE ACTION PLAN



At Chieveley Primary, we believe that small actions can lead to big changes, and we're excited to take steps toward a greener, more sustainable future. Our Climate Action Plan is all about creating a positive impact on the environment while inspiring our students, staff, and families to work together for a cleaner, healthier world.

From reducing waste to saving energy, we are committed to making eco-friendly choices that will benefit not only our school but the community around us. By embracing these efforts, we hope to encourage everyone at Chieveley Primary to become climate champions and help build a brighter, more sustainable tomorrow.

## SUMMARY

Completed: 2 items  
Not started: 11 items  
In progress: 5 items





Section

# DECARBONISATION

## IMPROVE INSULATION IN SCHOOL BUILDINGS

Proper insulation helps maintain a stable indoor temperature, reducing the need for heating in winter and cooling in summer. By improving insulation in walls, roofs, and windows, schools can lower energy bills and create a more comfortable learning environment. Over time, these upgrades contribute to significant emissions reductions and cost savings.

**NOT STARTED**

## RUN A SWITCH OFF CAMPAIGN

A switch-off campaign raises awareness about energy consumption and encourages simple behavioural changes to reduce waste. Schools can run competitions, put up reminder posters, and conduct audits to track energy savings. Engaging pupils through classroom discussions and real-time energy monitoring can make energy efficiency a long-term habit.

**NOT STARTED**





Section

# DECARBONISATION

## TRAVEL SURVEY

A travel survey helps schools gather data on pupil and staff commuting habits. By understanding travel patterns, schools can identify opportunities to encourage more sustainable travel options such as walking, cycling, carpooling, or using public transport. This information can support decisions on bike rack installations, road safety improvements, and incentive programs for eco-friendly commuting.

**NOT STARTED**

## INSTALL LED LIGHTING

LED lighting is a cost-effective and energy-efficient alternative to traditional incandescent and fluorescent bulbs. By switching to LED lighting, schools can significantly reduce electricity consumption and maintenance costs while lowering their carbon footprint. LED bulbs also generate less heat, improving classroom comfort and reducing the need for air conditioning.

*Started: 14th Aug 2025*

**IN PROGRESS**





Section

# DECARBONISATION

## INSTALL MOTION SENSORS TO LIGHTS

Motion sensors automatically turn lights on and off depending on occupancy. By installing these in classrooms, hallways, and restrooms, schools can significantly cut down on wasted electricity. This ensures that lights are only used when needed, reducing overall energy consumption.

*Started: 14th Aug 2025*

**IN PROGRESS**

## INSTALL SOLAR PANELS

Installing solar panels requires an MCS certified installer to install them. They will normally be able to give you an idea of the amount of solar panels that can fit on the premises. You'll need to also decide if you would like a battery system as well, to help store energy during winter months when there is less sunshine available.

*Started: 14th Aug 2025*

*Completed: 14th Aug 2025*

**COMPLETED**



Section

# ADAPTATION & RESILIENCE

## PLANT TREES TO CREATE SHADED AREAS

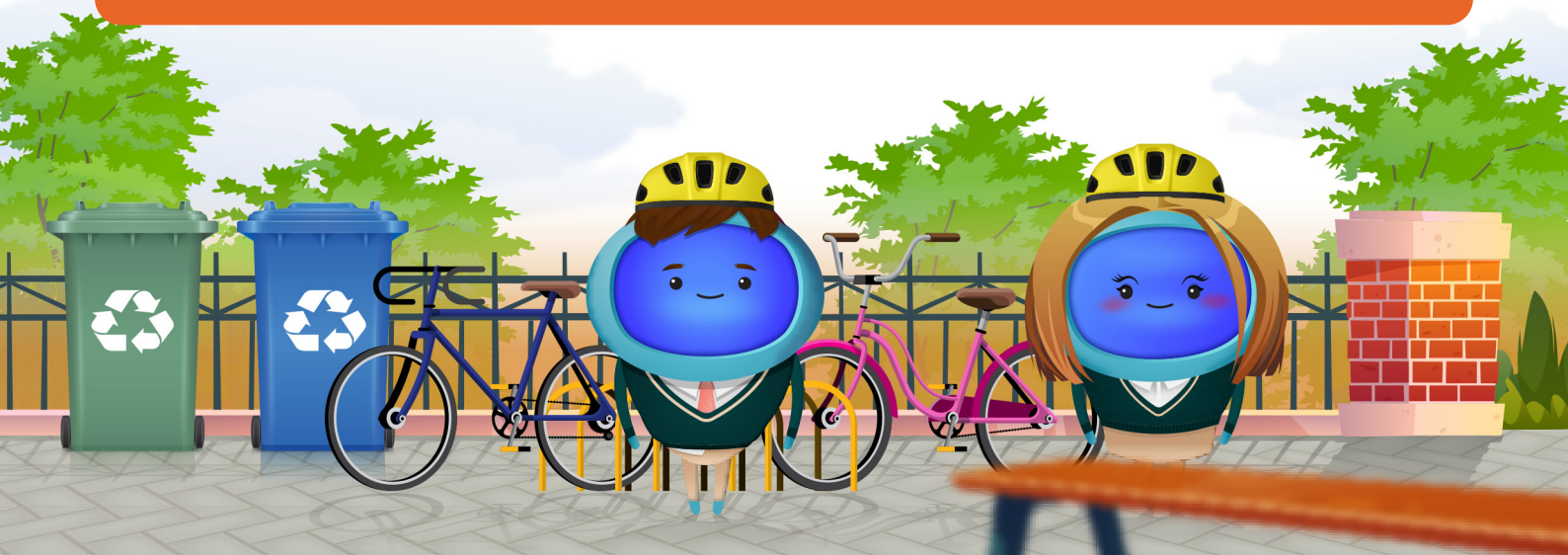
Planting trees strategically around the school campus provides natural cooling, reducing the need for artificial cooling systems during hot months. Trees also improve air quality by filtering pollutants, enhance biodiversity by providing habitats for birds and insects, and create inviting outdoor learning spaces. As they grow, trees contribute to carbon sequestration, offsetting a portion of the school's emissions while simultaneously improving pupil wellbeing.

**NOT STARTED**

## USE REFILLABLE WHITEBOARD MARKERS AND STATIONERY

Many standard whiteboard markers and pens are single-use, contributing to plastic waste. Schools can transition to refillable options, reducing landfill waste and lowering procurement costs in the long run. Refillable stationery is also often made from sustainable materials, further reducing environmental impact.

**NOT STARTED**



Section

# ADAPTATION & RESILIENCE

## WORK WITH SUPPLIERS TO REDUCE PACKAGING WASTE

Collaborate with vendors to minimise packaging materials. Long Description: Schools can request that suppliers reduce unnecessary packaging in product deliveries. This can include bulk purchasing to limit plastic wrapping and encouraging the use of recyclable or compostable materials.

**NOT STARTED**

## SET UP A SCHOOL RESILIENCE COMMITTEE

Establishing a resilience committee ensures ongoing adaptation to environmental challenges. This team, composed of pupils, staff, and community members, can assess risks, implement sustainability policies, and coordinate resilience projects. Regular meetings will help track progress and adjust strategies as needed.

*Started: 14th Aug 2025*

**IN PROGRESS**



Section

# BIODIVERSITY

## CREATE A SCHOOL POLLINATOR GARDEN

A school pollinator garden provides a habitat for bees, butterflies, and other beneficial insects. By planting native wildflowers and nectar-rich plants, schools can contribute to biodiversity and support local ecosystems. These gardens also serve as valuable outdoor learning spaces where pupils can observe pollination in action and learn about the role of insects in food production.

**NOT STARTED**

## GET A COMPOST BIN TO REDUCE FOOD WASTE

Composting helps reduce landfill waste while creating nutrient-rich soil for school gardens. Schools should consider site suitability, maintenance requirements, and pest prevention strategies. Composting can also be incorporated into science lessons, providing pupils with hands-on learning about decomposition and soil health. Schools with kitchen facilities can work with catering teams to compost food scraps, further reducing waste.

**NOT STARTED**



Section

# BIODIVERSITY

## WORK WITH THE PUPILS TO GET THEIR VIEWS ON HOW THE SCHOOL SITE SHOULD LOOK

Schools can involve pupils in decision-making about their learning environment, ensuring that sustainability considerations are incorporated. Whether through workshops, surveys, or school councils, pupil input can lead to more effective green space planning, improved outdoor learning areas, and projects that align with their needs and interests. Involving pupils also increases their sense of ownership and responsibility for the school environment.

**NOT STARTED**

## BUILD AN INSECT HOTEL

Log piles and disused wood pallets can be used to create a natural habitat for insects, amphibians, and fungi, enhancing biodiversity and promoting decomposition processes. They can be strategically placed in school gardens to serve as learning tools for ecology studies.

*Started: 14th Aug 2025*

**IN PROGRESS**



Section

# BIODIVERSITY

## START A GARDENING CLUB

A gardening club provides pupils with hands-on experience in growing flowers, vegetables, and trees, while also teaching them about sustainability, soil health, and biodiversity. Gardening improves mental well-being, fosters teamwork, and enhances outdoor learning opportunities. Schools can use gardens to produce food, beautify the environment, and engage pupils in long-term eco-friendly initiatives.

*Started: 14th Aug 2025*

*Completed: 14th Aug 2025*

**COMPLETED**



Section

# CLIMATE EDUCATION & GREEN SKILLS

## HOST A SUSTAINABILITY-THEMED ASSEMBLY EACH TERM

Hosting a sustainability-themed assembly each term ensures that pupils remain engaged with environmental topics. These events can feature guest speakers, pupil-led presentations, and school-wide challenges to encourage participation. Assemblies help build a culture of sustainability and reinforce its importance throughout the school community.

**NOT STARTED**

## ORGANISE A WALK TO SCHOOL WEEK

Encouraging pupils and staff to walk, bike, or use public transport instead of driving can reduce emissions and improve local air quality. A Walk to School Week helps raise awareness about the environmental and health benefits of active travel.

**NOT STARTED**



Section

# CLIMATE EDUCATION & GREEN SKILLS

## CREATE A SCHOOL ECO COMMITTEE

A school eco committee gives pupils the opportunity to lead sustainability projects, influence school policies, and advocate for environmental improvements. This initiative fosters leadership, encourages responsibility, and ensures sustainability remains a core focus in school decision-making.

*Started: 14th Aug 2025*

**IN PROGRESS**

